

► Ordering Information



# BOA Spine

Sizing Grid

MODEL	Part Number	Waist Measurement							
		X-Small (x=2)	Small (x=3)	Medium (x=4)	Large (x=5)	X-Large (x=6)	XX-Large (x=7)	XXX-Large (x=8)	
BOA Duel TLSO	51050-X	N/A	25"-30"	30"-35"	35"-42"	42"-48"	48"-57"	N/A	
BOA Low Profile with Chairback (8")	51020-X	20"-25"	25"-30"	30"-35"	35"-40"	40"-45"	45"-50"	50"-55"	
BOA Regular with Chairback (10")	51021-X	N/A	25"-30"	30"-35"	35"-40"	40"-45"	45"-50"	50"-55"	
BOA Low Profile (8")	51010-X	20"-25"	25"-30"	30"-35"	35"-40"	40"-45"	45"-50"	50"-55"	
BOA Regular (10")	51011-X	N/A	25"-30"	30"-35"	35"-40"	40"-45"	45"-50"	50"-55"	
BOA Female (75°)	51017-X	20"-25"	25"-30"	30"-35"	35"-40"	40"-45"	45"-50"	50"-55"	
BOA Lite (8")	51013-X	N/A	26"-32"	32"-38"	38"-43"	43"-48"	48"-53"	N/A	
BOA SI Belt	51024-X	N/A	25"-35"	35"-45"	45"-55"	N/A	N/A	N/A	
BOA Slim Panel XTR Low Profile (8")	51023-X	20"-25"	25"-30"	30"-35"	35"-40"	40"-45"	45"-50"	50"-55"	
BOA Slim Panel XTR Regular (10")	51025-X	N/A	25"-30"	30"-35"	35"-40"	40"-45"	45"-50"	50"-55"	
BOA Universe 627	510301	Universal							3XL Accessory #510310
BOA Universe 631	510302	Universal							3XL Accessory #510310
BOA Universe 637	510303	Universal							3XL Accessory #510310

Accessories

	Part Number	Waist Measurement / Chairback Height			
		Small (x=4)	Medium (x=5)	Large (x=6)	X-Large (x=7)
Cold Pack Accessory	510148	Compatible with all sizes of BOA			
Standard Chairback Accessory	51015-X	25"-30"/13.0"	30"-35"/14.0"	35"-40"/14.5"	40"-45"/14.5"
Short Chairback Accessory	51016-X	N/A	30"-35"/13.0"	35"-40"/13"	40"-45"/13"
BOA Slim Panel XTR Low Profile (8"), Female 75°	510230	Compatible with all sizes of Low Profile 8" & BOA Female 75°			
BOA Slim Panel XTR Regular (10")	510250	Compatible with all sizes of BOA Regular 10"			
BOA Universe 3XL Accessory	510310	Extension Panel (adds 5" to circumference)			
*The Short Chairback is designed for shorter torsos, so the frame is 13" in height for all sizes.					
7° Lordotic Insert (pair)	510150	Lordotic foam inserts fit easily into the posterior pockets of the BOA Regular and Low Profile braces, and are available in 7°, 10°, & 12° lordotic options.			
10° Lordotic Insert (pair)	510151				
12° Lordotic Insert (pair)	510152	Not for use with the BOA Duel TLSO and BOA Lite models.			



# Overview

## BOA SPINE BRACES

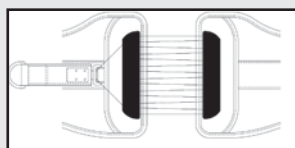
The **BOA** (Back Orthotic Appliance) product line was designed with function and patient comfort in mind. The **BOA** family of spine braces provides support for a broad range of spinal indications; from acute low back pain relief to post-operative support/stabilization. Each of the six **BOA** braces offer progressively more support for the spine, yet all share common design features.

### FEATURES & BENEFITS

- ▶ Simple hook-loop closure for ease of application
- ▶ Proprietary Lacer Design Compression panels allow for a smooth, uniform application of compression
- ▶ Easy to use pull handle(s) enable patient to quickly adjust brace to desired level of comfort
- ▶ Breathable, interior spacer fabric with outer mesh allows heat to escape without compromising brace performance
- ▶ Lifetime Warranty on Lacer Design Compression Panels
- ▶ 6 Month Warranty on all BOA Braces

### Lacer Design Compression System

The patented Lacer Design Compression System is an integral feature of each **BOA** product. The system utilizes a multiple tear-drop channel design in conjunction with a high-tension harness cord and one (or two) simple pull strap(s) to effectively tighten the orthosis with minimal exertion, strength, grasp, and body motion by the patient.



BOA PRODUCT LINE	Range of Spinal Support						
	L4-S5	L1-L5	L1-S1	L1-S1	T9-S1	S1-T9	T2/T3-S1
BOA SI							
BOA Lite							
BOA Low Profile BOA 75°							
BOA Regular BOA Universe 627							
BOA w/Chairback BOA Universe 631/637							
BOA Slim Panel XTR							
BOA Dual TLSO							
INDICATIONS FOR USE							
Compression Fracture							✓
Disc Herniation & Degeneration			✓	✓	✓	✓	✓
IDET Procedure			✓	✓	✓	✓	✓
Low Back Pain	✓	✓	✓	✓	✓	✓	✓
Low Back Sprains/Strains		✓	✓	✓	✓	✓	✓
Lumbar Disc Displacement		✓	✓	✓	✓	✓	✓
Osteoporosis			✓	✓	✓	✓	✓
Post-Operative Discectomy			✓	✓	✓	✓	✓
Post-Operative Fusion					✓	✓	✓
Post-Operative Laminectomy			✓	✓	✓	✓	✓
Sacroiliac Dysfunction Instability	✓						
Scoliosis							✓
Spinal Stenosis					✓	✓	✓
Spondylolisthesis			✓	✓	✓	✓	✓

## ▶ BOA SI

The **BOA SI** provides support for the Sacro-iliac joint. Excellent adjunct to post-injection pain following an S.I. procedure. Reduces pain and swelling for strained lax Sacro-iliac ligaments.



## ▶ BOA Lite

The **BOA Lite** is a lighter version of the Low Profile, without the rigid anterior panel. The Lite provides support for mild low back pain, from L1-L5.



## ▶ BOA Regular, Low Profile & BOA Female 75°

The **BOA Regular, Low Profile** and **BOA 75°** braces provide rigid anterior and posterior support. The 10" Regular model is designed for patients with longer torsos. The 8" Low Profile brace will accommodate most patients.



## ▶ BOA Slim Panel XTR

The **BOA Back Brace with Slim Panel XTR** limits extension and provides excellent support from T9-S1. This low profile brace features the patented Lacer Compression.

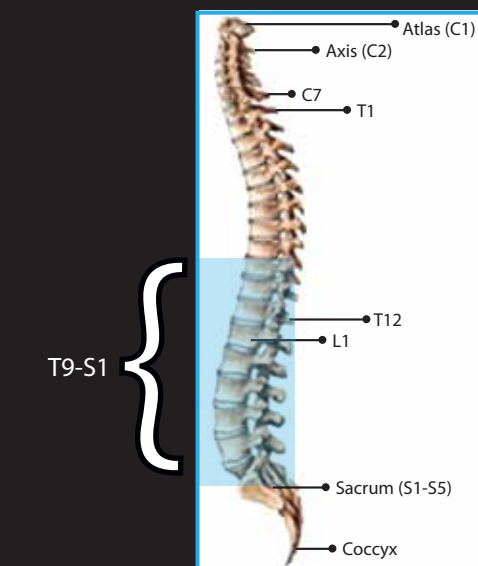
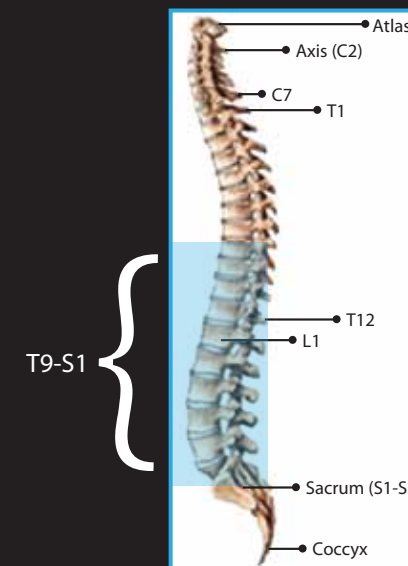
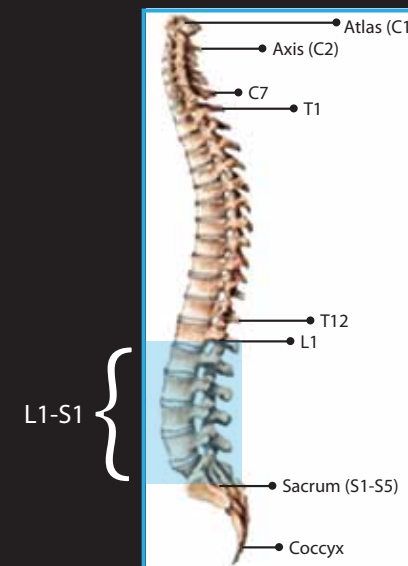
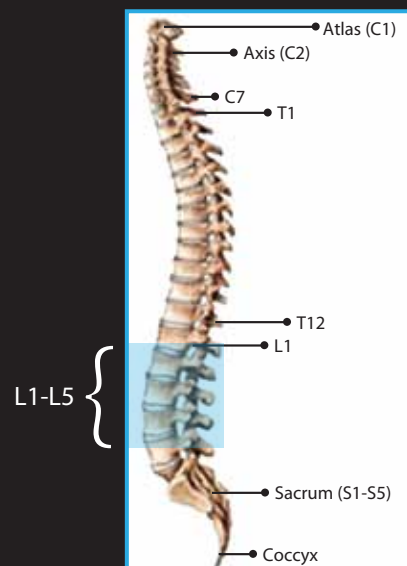
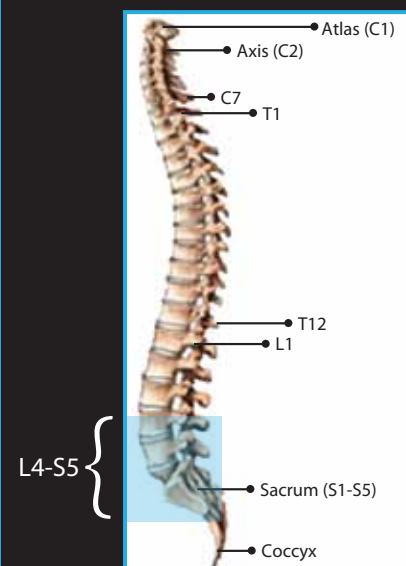


## ▶ BOA w/Chairback

The **BOA w/Chairback** combines the BOA Low Profile with a rigid chairback frame to provide spinal support from T9 - S1.



### ▶ Range of Spinal Support



### ▶ BOA Dual TLSO

The **BOA Dual TLSO** is a unique prefabricated orthosis (patent pending) for post-operative, post-traumatic, or chronic spinal pathology. The **Dual TLSO** provides full-circumferential rigid support from the scapular thoracic region (**T2 / T3**) of the spine down to the Sacrococcygeal junction (**S1**). The **BOA Dual** restricts forward flexion and encourages a hyperextension posture. This posture increases lumbar lordosis and resists lateral and rotary movements of the spine.

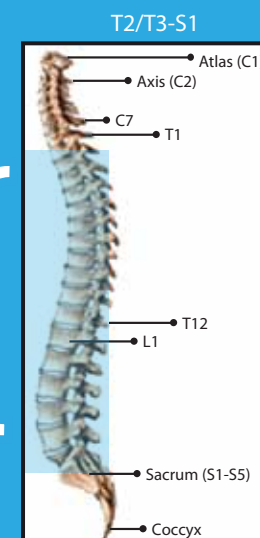
Rigid Anterior & Posterior Panels:

- Restrict forward flexion and trunk rotation
- Are easily removed and thermoformed for custom fit

Telescoping Sternal Y-Bar can be:

- Bent to desired angle for optimal compression
- Easily adjusted to desired height, with lock screw for patient safety and compliance

- Quick-release shoulder buckles, dual action pull handles, and hook-loop closures allow easy doffing and donning
- Dual Lacer Compression panels provide secure fit & optimal circumferential compression.



### BOA Universe 627/631/637

**BOA Universe** is designed to accommodate the need for a universally sized lumbar support that incorporates a mechanical advantage pulley closure system to improve compression and stability. Intuitively designed to be custom fitted to a patient's size and needs. The 627 model supports the spine from L1 to S1. Models 631 and 637 support levels S1 to T9, with the 637 having additional lateral controlling the lumbar region.



Belt length is easy to customize length to patients waist measurement allowing for optimal fit